

**RAINSTAMP®**



**MANUFACTURING**

**INDEPENDENT  
DISTRIBUTOR  
CATALOG**

**2024**

227 South Town East Blvd.  
Mesquite, TX 75149  
Ph: 800-204-5059  
Fax: 800-206-9015



# GENERAL TERMS AND CONDITIONS OF SALE

## INVOICE AND CREDIT TERMS

1. All invoices and payments are to be in US Dollars.
2. Returned check must be replaced with cash or certified funds plus a \$40 handling fee. A returned check could cause your account to be placed on Payment in Advance status.
3. Payment Options - Continental United States and Canada
  - a. Payment in Advance: bank draft, cashier's check, or wire transfer (\$25 wire fee applies). Company check accepted on established accounts.
  - b. Open Account: NET 30, from the date of the invoice. Payment on open accounts can be made via company check, bank draft, cashier's check, or wire transfer (\$25 wire fee applies).
4. Payment Options - Hawaii, Alaska, Mexico, and International
  - a. Payment in Advance: bank draft, cashier's check, or wire transfer (\$25 wire fee applies).

## SERVICE AND DELIVERY

1. Continental United States and Canada
  - a. LTL orders of less than \$5,000 of mixed product will be shipped same business day if order placed by 10am or next day if placed after 10am, freight prepaid and billed to customer.
  - b. LTL orders of \$5,000 or more of mixed product will be shipped within three business days, freight prepaid and billed to customer
  - c. Full visible capacity truckloads (53 feet) will be shipped within 5 business days, freight prepaid and billed to customer.
2. Hawaii, Alaska, Mexico, and International
  - a. LTL orders of mixed product will be shipped within 3 business days to customer's designated US freight forwarder or loaded into customer's container at Mesquite, Texas, freight is responsibility of customer.
  - b. Full visible capacity truckloads (53 feet) will be shipped within 5 business days to customer's designated US freight forwarder or loaded into customer's container at Mesquite, Texas, freight is responsibility of customer.

## PRICES

1. Prices are subject to change without notice, however, when possible we will inform you of changes prior to the effective date of the changes.

## DAMAGES OR SHORTAGES

1. Damaged or shortages caused by the freight carrier must be notated on the delivery receipt and documented with pictures in order to receive a credit. Without this we will not be responsible for the credit if the freight company does not pay the freight claim.
2. Shortages due to an error on the part of Rainstamp must have proof of shortage and must be reported within 48 hours for adjustment.



# GENERAL TERMS AND CONDITIONS OF SALE

## CLAIMS

1. Customers should inspect material on arrival and report any defects promptly.
2. We are not responsible for any claims, labor, or damages resulting from the misuse or inability to use products sold.
3. We are responsible only to the extent of material supplied. Such material must be made available for our inspection. We will adjust the matter fairly and promptly.

## RETURNS

1. Returns, for any reason, must be authorized by us in advance and shipped freight prepaid by the customer. Full credit less a 20% restocking charge will apply on stock items.
2. Any material being returned damaged will not be credited. Returned merchandise over 90 days old will be considered at scrap value or returned at customer expense.
3. A return material authorization (RMA) will be sent to the customer to return approved material for credit. The material must be shipped back within 48 hours along with a copy of the RMA included with the shipment.



## COLOR SELECTION

001 30 White	008 Clay	017 Linen	024 Colonial Red	033 Eggshell
002 Royal Brown	009 Colonial Blue	018 Light Bronze	025 Dark Bronze	129 Rustic Copper
003 Antique Ivory	011 Musket Brown	019 Tuxedo Gray	026 Herringbone	890 Solid Copper
004 Black	012 Forest Green	020 Heritage Cream	027 Copper Metallic	920 Galvalume Plus
005 Raffia Beige	013 Wicker	021 Colonial Gray	028 Paint Grip Metallic	
006 Beaver Brown	014 Dove Gray	022 Buckskin Brown	030 Frost White	
007 Classic Cream	015 Almond	023 80° White	031 Safari Beige	

## GUTTER TROUGH COMPONENTS

### GUTTER COIL

**NOTE: Effective 8/1/20 there will be a \$8.50 spin coil fee per spin**

#### 30 Painted Aluminum Colors, 16 oz. Solid Copper and 26 ga. Galvalume Plus Steel

Aluminum: approximately 350 lbs +/- . Copper: approximately 500 lbs +/-.

Aluminum: 11 7/8": 3 coils/skid. 15": 2 coils/skid. 18": 2 coils/skid. Copper: 2 coils/skid.

#### 11 7/8"

**.027" Aluminum**  
part # 1111951XXX

**.032" Aluminum**  
part # OS1111971XXX

**16 oz. Solid Copper**  
part # 111195890

**26 ga. Galvalume Plus Steel**  
part # 1111951920

#### 15"

**.027" Aluminum**  
part # 1115051XXX

**.032" Aluminum**  
part # OS1115071XXX

**16 oz. Solid Copper**  
part # 111505890

**26 ga. Galvalume Plus Steel**  
part # 1115051920

#### 18"

**.032" Aluminum**  
part # OS1118071XXX

**16 oz. Solid Copper**  
part # 111805890

**26 ga. Galvalume Plus Steel**  
part # 1118051920





## GUTTER TROUGH COMPONENTS

### END CAPS

30 Painted Aluminum Colors, 16 oz. Solid Copper and 26 ga. Galvalume Plus Steel

#### 5" K-Style

**25R/25L**

part # 2215031XXX (Right)  
 part # 2215051XXX (Left)

#### 6" K-Style

**25R/25L**

part # 2216031XXX (Right)  
 part # 2216051XXX (Left)

#### 7" K-Style

**25R/25L**

part # 2217031XXX (Right)  
 part # 2217051XXX (Left)



### END CAPS FOR HALF ROUND

30 Painted Aluminum Colors, 16 oz. Solid Copper and 26 ga. Galvalume Plus Steel

#### 6" Half Round

**25R/25L**

part # 2266031XXX (Right)  
 part # 2266051XXX (Left)



### MITERS

30 Painted Aluminum Colors, 16 oz. Solid Copper and 26 ga. Galvalume Plus Steel

#### 5" K-Style, 90°, Strip

**20 units/box**

O/S - part # 2315111XXX  
 I/S - part # 2315131XXX

#### 5" K-Style, 45°, Bay

**20 units/box**

O/S - part # 2315311XXX  
 I/S - part # 2315331XXX

#### 5" K-Style, 90°, Box

**20 units/box**

O/S - part # 2315611XXX  
 I/S - part # 2315631XXX

#### 6" K-Style, 90°, Strip

**20 units/box**

O/S - part # 2316111XXX  
 I/S - part # 2316131XXX

#### 6" K-Style, 45° Bay

**20 units/box**

O/S - part # 2316311XXX  
 I/S - part # 2316331XXX

#### 6" K-Style, 90°, Box

**20 units/box**

O/S - part # 2316611XXX  
 I/S - part # 2316631XXX

#### 7" K-Style, 90°, Strip

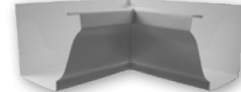
**20 units/box**

O/S - part # 2317111XXX  
 I/S - part # 2317131XXX

#### 7" K-Style, 45° Bay

**20 units/box**

O/S - part # 2317311XXX  
 I/S - part # 2317331XXX



### MITERS FOR HALF ROUND

30 Painted Aluminum Colors, 16 oz. Solid Copper and 26 ga. Galvalume Plus Steel

#### 6" Half Round, 90°, Strip

**20 units/box**

O/S - part # 2366111XXX  
 I/S - part # 2366131XXX



#### 6" Half Round, 45°, Bay

**20 units/box**

O/S - part # 2366311XXX  
 I/S - part # 2366331XXX



## K-STYLE HANGERS

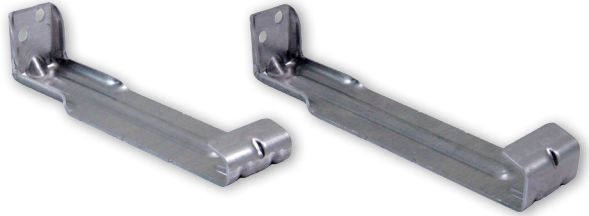
### GK14 HANGER

Aluminum .060 without clip

**100 PCS/BOX**

5", no clip - part # 2414556099

6", no clip - part # 2414656099



### GK16 HANGER

Aluminum .060 with or without clip

**100 PCS/BOX**

5", no clip - part # 2416506099

5", w/ clip - part # 2416536099

6", no clip - part # 2416606099

6", w/ clip - part # 2416636099

**BULK BOX**

1000 pcs - part # 2416509099

1000 pcs - part # 2416539099

500 pcs - part # 2416608099

500 pcs - part # 2416638099



### GK21 HANGER

Aluminum .060 with or without clip

**100 PCS/BOX**

5", no clip - part # 2421506099

5", w/ clip - part # 2421536099

6", no clip - part # 2421606099

6", w/ clip - part # 2421636099

**BULK BOX**

1000 pcs - part # 2421509099

1000 pcs - part # 2421539099

500 pcs - part # 2421608099

500 pcs - part # 2421638099



### GK23 HANGER

Aluminum .047 with or without clip

Copper and Galvanized Steel .050 with or without clip, 100 pcs/box

**100 PCS/BOX**

5", no clip - part # 2423506XXX

5", w/ clip - part # 2423536XXX

6", no clip - part # 2423606XXX

6", w/ clip - part # 2423636XXX

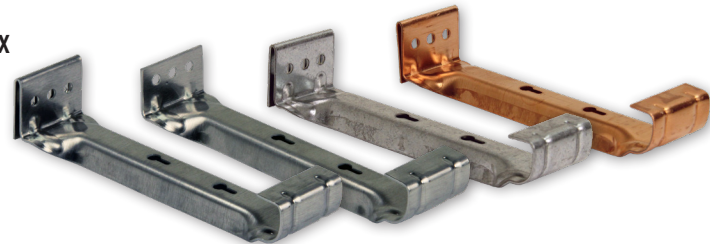
**BULK BOX**

500 pcs - part # 2423508099

500 pcs - part # 2423538099

250 pcs - part # 2423607099

250 pcs - part # 2423637099



### GK25 HANGER

Aluminum .047 with or without clip

**100 PCS/BOX**

5", no clip - part # 2425506099

5", w/ clip - part # 2425536099

6", no clip - part # 2425606099

6", w/ clip - part # 2425636099

**BULK BOX**

500 pcs - part # 2425508099

500 pcs - part # 2425538099

250 pcs - part # 2425607099

250 pcs - part # 2425637099



## K-STYLE HANGERS

### GK27 HANGER

Aluminum .060 with or without clip

**100 PCS/BOX**

5", no clip - part # 2427506099

5", w/ clip - part # 2427536099

6", no clip - part # 2427606099

6", w/ clip - part # 2427636099

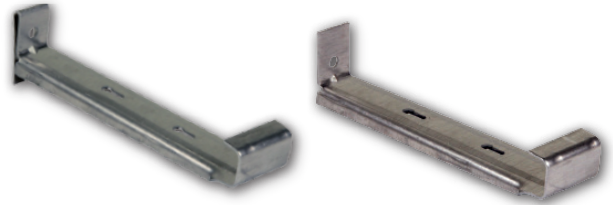
**BULK BOX**

500 pcs - part # 2427508099

500 pcs - part # 2427538099

250 pcs - part # 2427607099

250 pcs - part # 2427637099



### GK34 HANGER

Aluminum .047 with or without clip, #10 x 3" screw with T17 point, twin lead thread, 500 hour yellow zinc

**100 PCS/BOX**

5", no clip - part # 2434556099

5", w/ clip - part # 2434576099

6", no clip - part # 2434656099

6", w/ clip - part # 2434676099

**BULK BOX**

500 pcs - part # 2434558099

500 pcs - part # 2434578099

250 pcs - part # 2434657099

250 pcs - part # 2434677099



### GK36 HANGER

Aluminum .047 with or without clip, #12 x 3" screw with T17 point, twin lead thread, 500 hour yellow zinc

**100 PCS/BOX**

5", no clip - part # 2436556099

5", w/ clip - part # 2436576099

6", no clip - part # 2436656099

6", w/ clip - part # 2436676099

**BULK BOX**

500 pcs - part # 2436558099

500 pcs - part # 2436578099

250 pcs - part # 2436657099

250 pcs - part # 2436677099



### GK38 HANGER

Aluminum .047, Wider, with or without clip, #12 x 3" screw with T17 point, twin lead thread, 500 hour yellow zinc

**100 PCS/BOX**

5", no clip - part # 2438556099

5", w/ clip - part # 2438576099

6", no clip - part # 2438656099

6", w/ clip - part # 2438676099

For Aluminum 7" see GK42



Solid Copper .050 with or without clip, #12 x 3" stainless steel screw with T17 point, high low thread, 1000 hour Silver Ruspert  
 Galvanized Steel .050 with or without clip, #12 x 3" screw with T17 point, twin lead thread, 500 hour yellow zinc

**100 PCS/BOX**

5", no clip - part # 2438556XXX

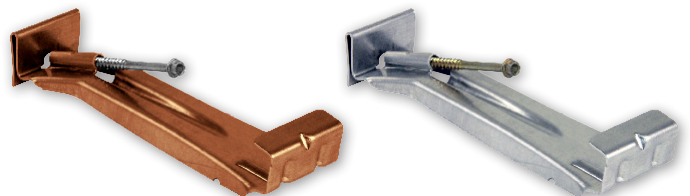
5", w/ clip - part # 2438576XXX

6", no clip - part # 2438656XXX

6", w/ clip - part # 2438676XXX

7", no clip - part # 2438766XXX

7", w/ clip - part # 2438776XXX



## K-STYLE HANGERS

### GK40 HANGER

Aluminum .055 with or without clip, #12 x 3.5" screw with T17 point, high low thread and 1000 hour Black Ruspert

**100 PCS/BOX**

5", no clip - part # 2440556099

5", w/ clip - part # 2440576099

6", no clip - part # 2440656099

6", w/ clip - part # 2440676099

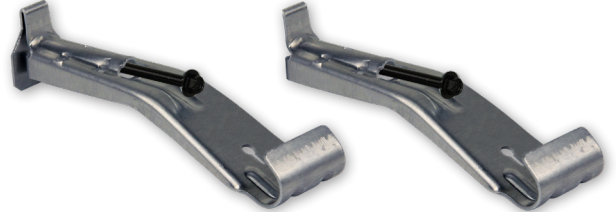
**BULK BOX**

500 pcs - part # 2440558099

500 pcs - part # 2440578099

250 pcs - part # 2440657099

250 pcs - part # 2440677099



Copper .050 with or without clip, #12 x 3.5" stainless steel screw with T17 point, high low thread, and 1000 hour Silver Ruspert

**100 PCS/BOX**

5", no clip - part # 2440556890

5", w/ clip - part # 2440576890

6", no clip - part # 2440656890

6", w/ clip - part # 2440676890



### GK42 HANGER

Aluminum .060 with or without clip, #12 x 3" screw with T17 point, twin lead thread, 500 hour yellow zinc

**100 PCS/BOX**

5", no clip - part # 2442556099

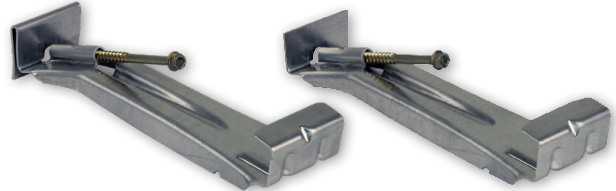
5", w/ clip - part # 2442576099

6", no clip - part # 2442656099

6", w/ clip - part # 2442676099

7", no clip - part # 2442766099

7", w/ clip - part # 2442776099



### GK44 HANGER

Aluminum .060 with or without clip, #12 x 3.5" screw with T17 point, high low thread and 1000 hour Black Ruspert

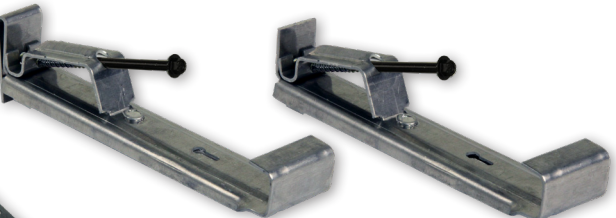
**100 PCS/BOX**

5", no clip - part # 2444556099

5", w/ clip - part # 2444576099

6", no clip - part # 2444656099

6", w/ clip - part # 2444676099



### GK46 HANGER

Aluminum .060 with clip

**100 PCS/BOX**

5", w/ clip - part # 2446556099

6", w/ clip - part # 2446676099





## HALF ROUND HANGERS

### HR50 HANGER

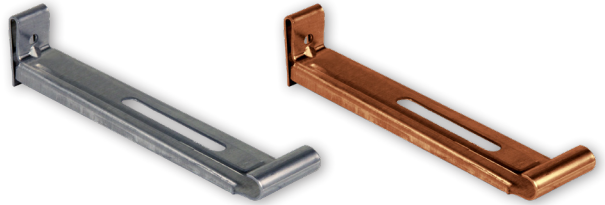
Aluminum .060 with or without clip slotted for rod  
 Solid Copper .050 with or without clip slotted for rod

**100 PCS/BOX**

6" With Clip- part # 2450636XXX

**100 PCS/BOX**

6" No Clip- part # 2450616XXX



### ROD FOR HR50

Aluminum and Brass

**50 PCS/BOX**

11" - part # 2451006XXX

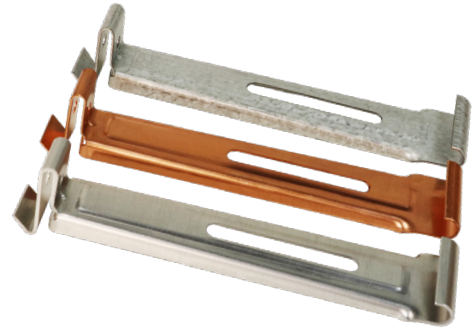


### HR51 HANGER

Aluminum .060 with clip  
 Solid Copper .050 with clip  
 Galvalume Plus .040 with clip

**100 PCS/BOX**

6" With Clip- part # 2451636XXX



### HR52 HANGER

Aluminum .060 no wedge, #12 x 3" screw with T17 point, twin lead thread, 500 hour yellow zinc

**100 PCS/BOX**

6" - part # 2452666XXX



### HR53 HANGER

Aluminum .060 with wedge, #12 x 3" screw with T17 point, twin lead thread, 500 hour yellow zinc

**100 PCS/BOX**

6" - part # 2453666099



Solid Copper .050, #12 x 3" stainless steel screw with T17 point, high low thread, and 1000 hour Silver Ruspert  
 Galvanized Steel .050 with wedge, #12 x 3" screw with T17 point, twin lead thread, 500 hour yellow zinc

**100 PCS/BOX**

6" - part # 2453666XXX

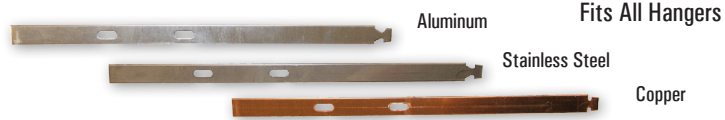


## T-STRAP

### UV99

Aluminum .060  
 Copper .050 and Stainless Steel .035

T-Strap, 9.8"  
 100 PCS/BOX  
 part # 2499006XXX



## EXTERNAL HANGERS FOR HALF ROUND

### HR58 6" STAMPED BRACKET

30 Painted Aluminum Colors, 16 oz. Solid Copper and Galvalume Plus Steel

25 PCS/BOX  
 part # 2558726XXX



### 6" #10 COMBO W/ SPRING

White, Royal Brown, Dark Bronze, Solid Copper, and Galvanized Steel

50 PCS/BOX  
 part # 255004XXX



### 6" CIRCLE W/ SPRING, NUT & BOLT

White, Royal Brown, Dark Bronze, Solid Copper, and Galvanized Steel

50 PCS/BOX  
 part # 255224XXX



### EXTRA SPRING

White, Royal Brown, Dark Bronze, Brass, and Galvanized Steel

50 PCS/BOX  
 part # 255226XXX



# EXTERNAL HANGERS FOR HALF ROUND

## SHANKS

Solid Copper and Galvanized Steel

**#6 Shank for  
 OG Crown Molding**

50 pcs/box  
 part # 255106XXX



**#25 Shank Sheeting,  
 1/2 Pitch**

50 pcs/box  
 part # 255115XXX



White, Royal Brown, Solid Copper, and Galvanized Steel

**#11 Exposed Rafter,  
 1/3 Pitch**

50 pcs/box  
 part # 255111XXX



**#12 Shank Sheeting,  
 1/3 Pitch**

50 pcs/box  
 part # 255112XXX



White, Royal Brown, Dark Bronze, Solid Copper, and Galvanized Steel

**#30 Shank Adjustable Pitch w/ nut & bolt**

50 pcs/box  
 part # 255116XXX



Brass and Galvanized Steel

**Extra Nut & Bolt #10-24 x 3/4**

50 pcs/box  
 part # 255228XXX



**OUTLETS**

**OUTLETS FOR FLAT BOTTOM GUTTER**

All shapes and sizes available in four finishes:  
 All Solid Copper and Galvanized Steel Outlets are 50 pcs/box.



**2 3/8" Round**

With Dimples, No Holes  
 250 pcs/box\*  
 part # 2612111XXX



**2 3/4" Round**

With Dimples, No Holes  
 250 pcs/box\*  
 part # 2613111XXX



**2 5/8" Square**

No Dimples, With Holes  
 100 pcs/box\*  
 part # 2622111XXX



**3" Square**

No Dimples, With Holes  
 100 pcs/box\*  
 part # 2623111XXX



**3" Round**

No Dimples, With Holes  
 100 pcs/box\*  
 part # 2614111XXX



**3 3/8" Round**

With Dimples, With Holes  
 100 pcs/box\*  
 part # 2615111XXX



**3" Oval**

No Dimples, With Holes  
 100 pcs/box\*  
 part # 2633111XXX



**4" Oval**

With Dimples, With Holes  
 50 pcs/box  
 for 5/6" part # 2634111XXX



No Dimples, With Holes  
 for 6" only part # 2634131XXX

**2x3 Rectangle**

No Dimples, With Holes  
 100 pcs/box\*  
 part # 2643111XXX



**3x4 Rectangle**

No Dimples, With Holes  
 50 pcs/box  
 part # 2644121XXX



Mill Finish, Solid Copper and Galvanized Steel

**4x5 Rectangle**

No Dimples, With Holes  
 50 pcs/box  
 part # 2645141XXX



**\* ALL SOLID COPPER AND GALVANIZED STEEL OUTLETS ARE 50 PCS/BOX**



## OUTLETS

### OUTLETS FOR HALF ROUND GUTTER

White Aluminum, 16 oz. Solid Copper and Galvanized Steel

#### 3" Half Round

No Holes, No Dimples  
 50 pcs/box  
 part # 2653640XXX



#### 4" Half Round

With Dimples, No Holes  
 50 pcs/box  
 part # 2654441XXX



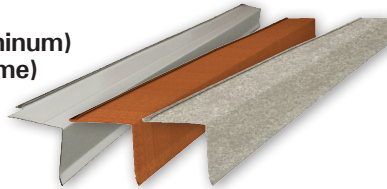
## GUTTER TROUGH ACCESSORIES

### FLASHING

30 Painted Aluminum Colors, 16 oz. Solid Copper and 26 ga. Galvalume Plus Steel

#### Drip Edge, 1.5"x1.5"x10'

30 pcs/box (26 Painted Aluminum)  
 15 pcs/box (Copper, Galvalume)  
 part # 2910151XXX

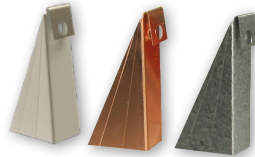


### WEDGES

White Aluminum, 16 oz. Solid Copper and 26 ga. Galvalume Plus Steel

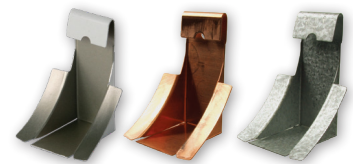
#### Gutter Wedge for K-Style

100 pcs/box  
 5" - part # 2927151XXX  
 6" - part # 2927161XXX



#### Gutter Wedge for Half Round

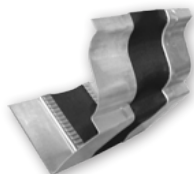
100 pcs/box  
 6" - part # 2927661XXX



### EXPANSION JOINT FOR K-STYLE 5", 6"

Aluminum

1 pc/box  
 5" - part # 293305099  
 6" - part # 293306099

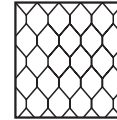


# GUTTER GUARD

## EXPANDED WIRE MESH SMALL HOLE

### Lock In for K-Style

**Black Powder Coated Steel and Copper**  
 4' pcs, 25 pcs/box  
 5" - part # 3821051XXX  
 6" - part # 3821061XXX  
 7" - part # 3821071XXX

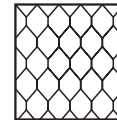


Small Hole



### Step In for K-Style

**Black Powder Coated Steel and Copper**  
 4' pcs, 25 pcs/box  
 5" - part # 3823051XXX  
 6" - part # 3823061XXX  
 7" - part # 3823071XXX

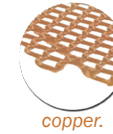


Small Hole



### Flat Step for All Styles

**Black Powder Coated Steel and Copper**  
 4' pcs, 25 pcs/box  
 6" width for 5" - part # 3825061XXX  
 7" width for 6" - part # 3825071XXX  
 8" width for 7" - part # 3825081XXX  
 9" width for 8" - part # 3825091XXX

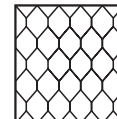
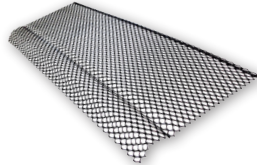
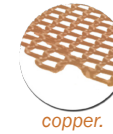


Small Hole



### Round Step for 6" Half Round

**Black Powder Coated Steel and Copper**  
 4' pcs, 25 pcs/box  
 6" - part # 3827061XXX



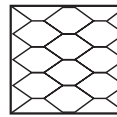
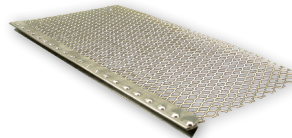
Small Hole



## EXPANDED WIRE MESH STANDARD HOLE

### Drop In for K-Style

**Mill Finish Aluminum**  
 4' pcs, 50 pcs/box  
 5" - part # 3813051099  
 6" - part # 3813061099



Standard Hole

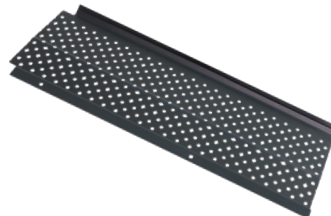


## SHEET METAL PERFORATED

### Round N Square for K-Style

**Black Painted Aluminum**  
 4' pcs, 50 pcs/box      10' pcs, 25 pcs/box  
 5" - part # 3919051XXX      5" - part # 3919151XXX  
 6" - part # 3919061XXX      6" - part # 3919161XXX

*Available in: 30° White and Black*

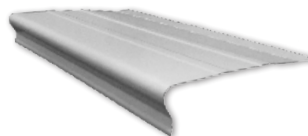


## SOLID GUTTER GUARD

### Midwest E-Z Solid for K-Style

4' pcs, 25 pcs/box  
 5" - part # 395075XXX  
 6" - part # 395016XXX

*Available in: 30° White, Royal Brown, and Black*



## DOWNSPOUT COMPONENTS

### RECTANGULAR DOWNSPOUTS

30 Painted Aluminum Colors, 16 oz. Solid Copper and 26 ga. Galvalume Plus Steel

**2" x 3" x 10'**

10 units/box  
**Aluminum**  
 part # 4143251XXX

5 units/box  
**Solid Copper**  
 part # 4143251890

**Galvalume Plus Steel**  
 part # 4143251920

**3" x 4" x 10'**

10 units/box  
**Aluminum**  
 part # 4144251XXX

5 units/box  
**Solid Copper**  
 part # 4144251890

**Galvalume Plus Steel**  
 part # 4144251920

**4" x 5" x 10'**

6 units/box  
**Aluminum**  
 part # 4145251XXX

**Solid Copper**  
 part # 4145251890

**Galvalume Plus Steel**  
 part # 4145251920



### RECTANGULAR ELBOWS

30 Painted Aluminum Colors, 16 oz. Solid Copper and 26 ga. Galvalume Plus Steel

**2" x 3", A or B, 75°**

36 pcs/box  
 A - part # 4243271XXX  
 B - part # 4243771XXX

**3" x 4", A or B, 75°**

20 pcs/box  
 A - part # 4244271XXX  
 B - part # 4244771XXX

**4" x 5", A or B, 75°**

12 pcs/box  
 A - part # 4245271XXX  
 B - part # 4245771XXX

A, 75°    B, 75°



### RECTANGULAR ELBOWS & OFFSETS - MADE TO ORDER

30 Painted Aluminum Colors, 16 oz. Solid Copper and 26 ga. Galvalume Plus Steel

**2" x 3", A, 22.5°**

72 pcs/box  
 part # 4243221XXX

**2" x 3", A, 45°**

42 pcs/box  
 part # 4243241XXX

**3" x 4", A, 22.5°**

40 pcs/box  
 part # 4244221XXX

**3" x 4", A, 45°**

30 pcs/box  
 part # 4244241XXX

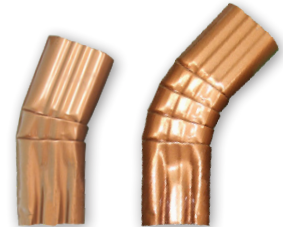
**4" x 5", A, 22.5°**

12 pcs/box  
 part # 4245221XXX

**4" x 5", A, 45°**

12 pcs/box  
 part # 4245241XXX

22.5°    45°



**2" x 3" x 2"**

24 pcs/box  
 part # 4343221XXX

**3" x 4" x 2"**

15 pcs/box  
 part # 4344221XXX

**2" x 3" x 4"**

24 pcs/box  
 part # 4343241XXX

**3" x 4" x 4"**

15 pcs/box  
 part # 4344241XXX

**2" x 3" x 6"**

24 pcs/box  
 part # 4343261XXX

**3" x 4" x 6"**

15 pcs/box  
 part # 4344261XXX



## DOWNSPOUT COMPONENTS

### ROUND DOWNSPOUTS

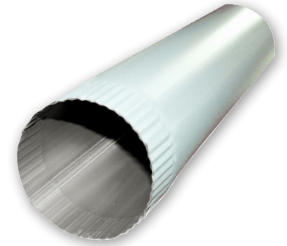
30 Painted Aluminum Colors, 16 oz. Solid Copper and 26 ga. Galvalume Plus Steel

**3" x 10' Round**

5 units/box  
 part # 4153251XXX

**4" x 10' Round**

5 units/box  
 part # 4154251XXX



### ROUND ELBOWS

30 Painted Aluminum Colors, 16 oz. Solid Copper and 26 ga. Galvalume Plus Steel

**3" Round, 75°**

10 units/box  
 part # 4253271XXX

**4" Round, 75°**

10 units/box  
 part # 4254271XXX

75°



### ROUND ELBOWS & OFFSETS - MADE TO ORDER

30 Painted Aluminum Colors, 16 oz. Solid Copper and 26 ga. Galvalume Plus Steel

**3" Round, 22.5°**

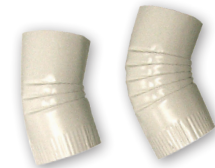
12 units/box  
 part # 4253221XXX

**4" Round, 22.5°**

12 units/box  
 part # 4254221XXX

22.5°

45°



**3" Round, 45°**

12 units/box  
 part # 4253241XXX

**4" Round, 45°**

10 units/box  
 part # 4254241XXX

**3" x 2"**

6 pcs/box  
 part # 4353221XXX

**3" x 4"**

6 pcs/box  
 part # 4353241XXX

**3" x 6"**

6 pcs/box  
 part # 4353261XXX

**4" x 2"**

4 pcs/box  
 part # 4354221XXX

**4" x 4"**

4 pcs/box  
 part # 4354241XXX

**4" x 6"**

4 pcs/box  
 part # 4354261XXX



# DOWNSPOUT COMPONENTS

## CONDUCTOR HEADS

### Decorative

30 Painted Aluminum Colors, Solid Copper and Galvalume Plus Steel  
 1 pc/box  
 3" Oval Outlet part # 441201XXX  
 4" Oval Outlet part # 441203XXX



## PIPE BANDS

30 Painted Aluminum Colors, 16 oz. Solid Copper and 26 ga. Galvalume Plus Steel

### Diamond Rectangle 2x3 / 3x4

100 units/box  
 part # 4542721XXX



## PIPE BANDS, PIPE CLIPS & PIPE CLEAT - MADE TO ORDER

30 White, 80 White, 16 oz. Solid Copper and 26 ga. Galvalume Plus Steel

### Decor Round 4"

50 units/box  
 part # 4550721XXX



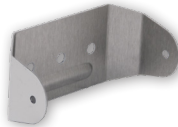
### HD Rectangle 2x3 and 3x4

50 units/box  
 2x3" part # 4560401XXX  
 3x4" part # 4560451XXX



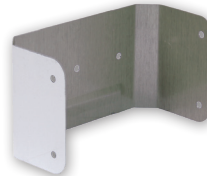
### 3" Pipe Clip

100 units/box  
 part # 4558301XXX



### 4" Pipe Clip

100 units/box  
 part # 4558401XXX



### Pipe Cleat

100 units/box  
 part # 4558901XXX



# FASTENERS

## SCREWS

### #8 x 1/2"

1/4" Hex Head  
 28 Painted Aluminum colors  
 100 ct. - part # 511211XXX  
 1000 ct. - part # 511212XXX



### #8 x 1/2"

1/4" Hex Head  
 Zinc Plated  
 100 ct. - part # 511211905  
 1000 ct. - part # 511212905



### #8 x 1/2"

1/4" Hex Head  
 Copper Plated Stainless Steel  
 100 ct. - part # 511211967



### SpeedMaster® #10 x 1 1/2"

250 units/bag  
 10 bags/box  
 Black Ruspert Finish  
 no washer - part # 513042904  
 washer - part # 513142904



### SpeedMaster® #10 x 2"

250 units/bag  
 8 bags/box  
 Black Ruspert Finish  
 no washer - part # 513052904  
 washer - part # 513152904



### SpeedMaster® #10 x 1 1/2" with Washer - Stainless Steel

50 units/bag  
 washer - part # 513142961



### SpeedMaster® #10 x 2" with Washer - Stainless Steel

50 units/bag  
 washer - part # 5131542961



## RIVETS

### #42 x 1/8"

27 Painted Aluminum colors  
 100 ct.  
 part # 521421XXX



### #42 x 1/8"

Solid Copper Barrel, Copper  
 Plated Mandrel  
 100 ct.  
 part # 521421890



### #42 x 1/8"

Zinc Plated Steel  
 100 ct.  
 part # 521421905





## PAINT & SEALANT

### SEALANT

**Ruscoe PSCG, 10.3 oz.**

24 units/box  
 gray - part # 591141014



**Ruscoe PSCG HV, 10.3 oz.**

24 units/box  
 gray - part # 591142014



**Geocel 2320, 10.3 oz.**

24 units/box  
 white - part # 593320001  
 gray - part # 593320014  
 clear - part # 593320099



**OSI GS121, 10.2 oz.**

12 units/box  
 white - part # 592121001



### TOUCH-UP PAINT

**Spray-On Paint, 12 oz.**

29 colors  
 12 units/box  
 part # 582160XXX



**Brush-On Paint, 0.6 oz.**

Rustic Copper  
 12 units/box  
 part # 581006129



## DRAINAGE

### SPLASH BLOCK

**Plastic, Slate 10" x 21"**

10 units/box  
 gray - part # 612100014  
 tan - part # 612100017



### ADAPTERS

**2" x 3" DS to 4" Universal**

1 unit/box  
 part # 623022004



**3" x 4" DS to 4" Universal**

1 unit/box  
 part # 623024004





**GUTTER MACHINE PACKAGES - STOCKED**

**IRONMAN JR.**

**K-Style 5" - 1 Cradle**

1 Full Coil Cradle, 1 Guillotine  
part # ON811210015012

**K-Style 5/6" - 1 Cradle**

1 Full Coil Cradle, 2 Guillotines  
part # ON811210015112

**K-Style 6" - 1 Cradle**

1 Full Coil Cradle, 1 Guillotine  
part # ON811210016012

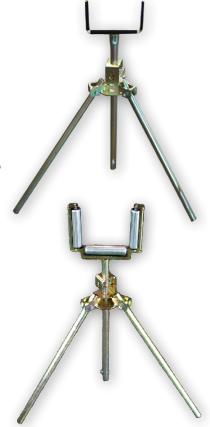
**STANDARD RUN OUT STAND  
W/ADJUSTABLE LEG**

**5" & 6" & 5"/6" Combo, 6" HR**

part # ON811280100

**7" & 6"/7" Combo**

part # ON811280107



**DELUXE RUN OUT STAND  
W/ADJUSTABLE LEG**

**5" & 6" & 5"/6" Combo, 6" HR**

part # ON811280130

**GUTTER MACHINE PACKAGES - SPECIAL ORDER\***

*\*Special Orders include an additional freight charge and lead time.*

Orders for a Base Machine require the addition of a Front Pull Guillotine or End Plate.

**IRONMAN**

**5"**

**K-Style 5" - 1 Spool**

1 Upright, 1 Spool, 1 Guillotine  
part # ON811210015021

**K-Style 5" - 1 Cradle**

1 Full Coil Cradle, 1 Guillotine  
part # ON811210015022

**K-Style 5" - 2 Spools**

2 Uprights, 2 Spools, 1 Guillotine  
part # ON811210015023

**K-Style 5" - 2 Cradles**

2 Full Coil Cradles, 1 Guillotine  
part # ON811210015024

**5"/6" COMBO**

**K-Style 5"/6" - 1 Spool**

1 Upright, 1 Spool, 2 Guillotines  
part # ON811210015121

**K-Style 5"/6" - 1 Cradle**

1 Full Coil Cradle, 2 Guillotines  
part # ON811210015122

**K-Style 5"/6" - 2 Spools**

2 Uprights, 2 Spools, 2 Guillotines  
part # ON811210015123

**K-Style 5"/6" - 2 Cradles**

2 Full Coil Cradles, 2 Guillotines  
part # ON811210015124

**6"**

**K-Style 6" - 1 Spool**

1 Upright, 1 Spool, 1 Guillotine  
part # ON811210016021

**K-Style 6" - 1 Cradle**

1 Full Coil Cradle, 1 Guillotine  
part # ON811210016022

**K-Style 6" - 2 Spools**

2 Uprights, 2 Spools, 1 Guillotine  
part # ON811210016023

**K-Style 6" - 2 Cradles**

2 Full Coil Cradles, 1 Guillotine  
part # ON811210016024

**IRONMAN JR.**

**5"**

**K-Style 5" - 1 Spool**

1 Upright, 1 Spool, 1 Guillotine  
part # ON811210015011

**5/6"**

**K-Style 5/6" - 1 Spool**

1 Upright, 1 Spool, 2 Guillotines  
part # ON811210015111

**6"**

**K-Style 6" - 1 Spool**

1 Upright, 1 Spool, 1 Guillotine  
part # ON811210016011



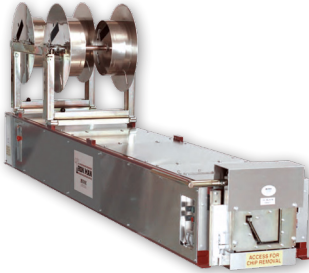
## GUTTER MACHINE - SPECIAL ORDER\*

### BASE MACHINE

*\*Special Orders include an additional freight charge and lead time.  
 Equipment shown here with optional spool accessory*

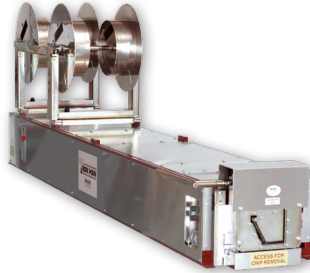
#### K-Style 7" K

Base Machine  
 part # ON81122001701



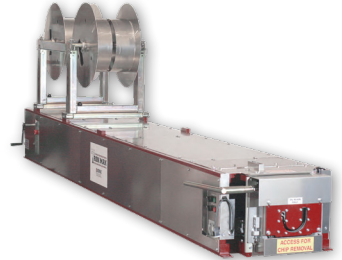
#### K-Style 6\"/>

Base Machine  
 part # ON81122001621



#### 6\"/>

Base Machine  
 part # ON81122016601



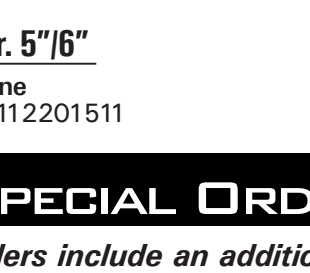
#### Ironman 5\"/>

Base Machine  
 part # ON81122001502



#### Ironman 5\"/>

Base Machine  
 part # ON81122001512



#### Ironman 6\"/>

Base Machine  
 part # ON81122001602



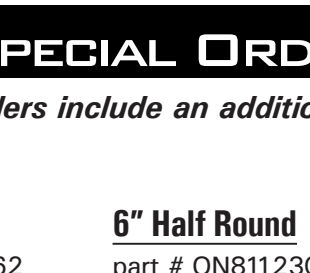
#### Ironman Jr. 5\"/>

Base Machine  
 part # ON81122001501



#### Ironman Jr. 5\"/>

Base Machine  
 part # ON8112201511



#### Ironman Jr. 6\"/>

Base Machine  
 part # ON81122001601



## GUTTER MACHINE-SPECIAL ORDER ACCESSORIES\*

*\*Special Orders include an additional freight charge and lead time.*

### FRONT PULL GUILLOTINE

#### 5\"/>

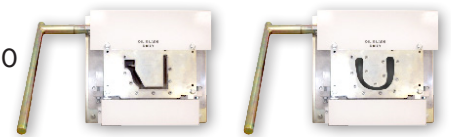
part # ON8112300151

#### 6\"/>

part # ON8112300162

#### 6\"/>

part # ON8112301660



#### 6\"/>

part # ON8112300161

#### 7\"/>

part # ON8112300172

### END PLATE (NO SHEAR)

#### 5\"/>

part # ON8112350151

#### 7\"/>

part # ON8112350172

#### 6\"/>

part # ON8112351660



### FULL COIL CRADLE MACHINE MOUNT

#### 5\"/>

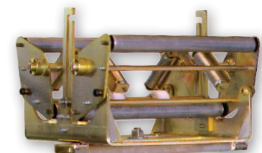
part # ON811240151

#### 7\"/>

part # ON811240172

#### 6\"/>

part # ON811240660



## GUTTER MACHINE-SPECIAL ORDER ACCESSORIES\*

*\*Special Orders include an additional freight charge and lead time.*

### UPRIGHT TURNSTILE

5" & 6" & 5"/6" Combo

part # ON811250151

7" & 6"/7" Combo

part # ON811250172

6" Half Round

part # ON811250660



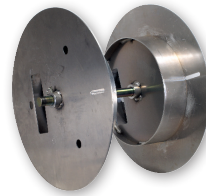
### SPOOL W/SHAFT

5" & 6" & 5"/6" Combo, 6" HR

part # ON811260151

7" & 6"/7" Combo

part # ON811260172



### TRANSFER BAR SET

Fits All Sizes

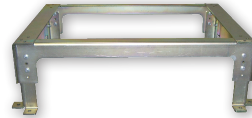
part # ON811265001



### MACHINE STAND RISER PAD, TALL

Fits All Machines

part # ON811290001



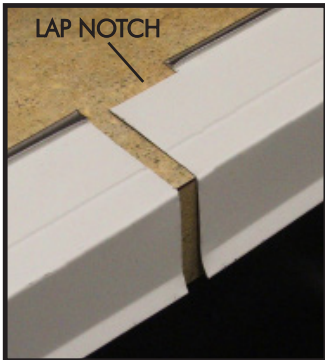
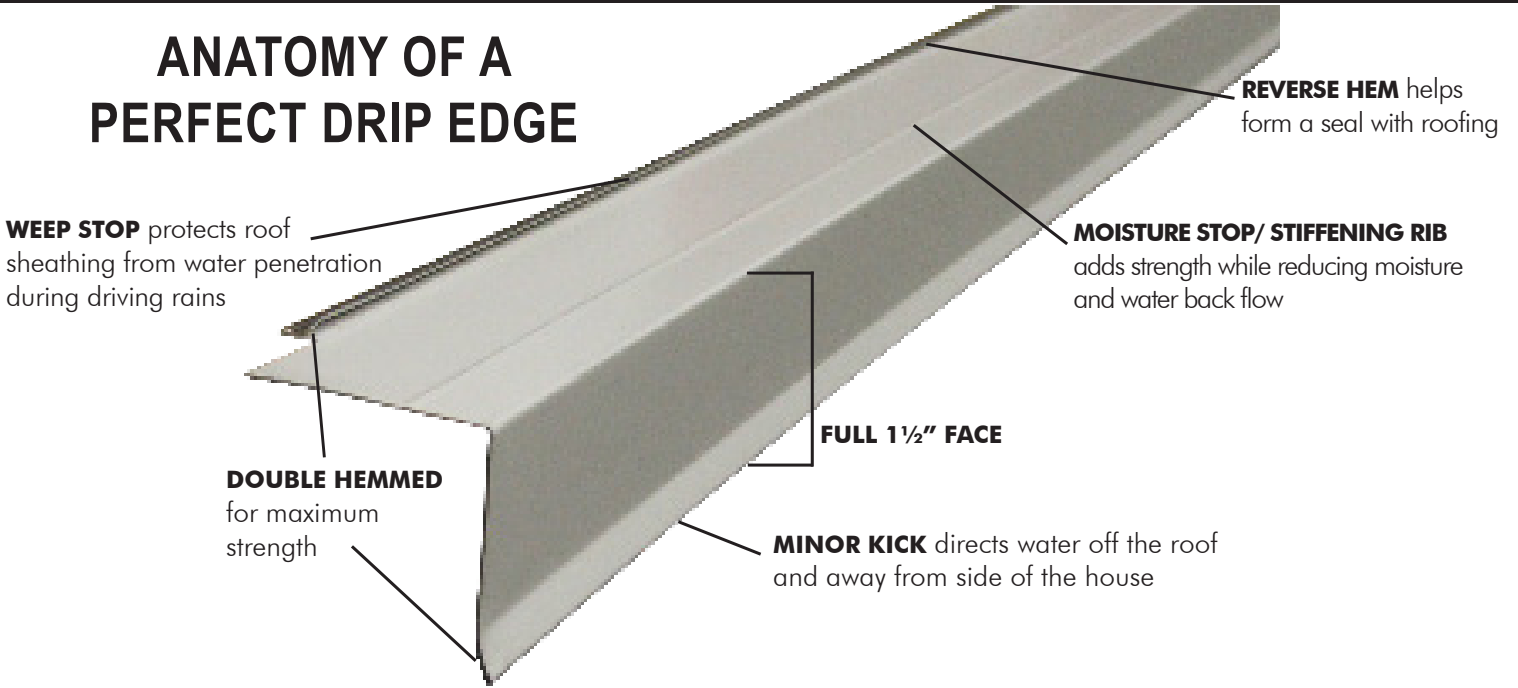
RAINSTAMP®



MANUFACTURING

# DRIP EDGE

## ANATOMY OF A PERFECT DRIP EDGE

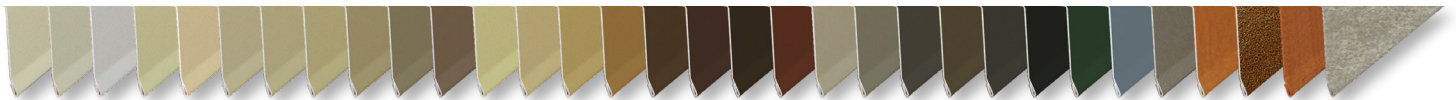


LAP NOTCH specially designed for a perfect fit every time, keeping water from seeping through, and eliminating waste from overlapping



1 1/2" X 1 1/2"

10' pieces



30 Painted Aluminum Colors, Solid Copper, and Galvalume Plus Steel

Aluminum - 30/box Copper, Galvalume - 15/box





RAINSTAMP®



MANUFACTURING

A series of 20 horizontal lines spanning the width of the page, providing a template for text entry.



**RAINSTAMP®**



**MANUFACTURING**

227 South Town East Blvd.  
Mesquite, TX 75149  
Ph: 800-204-5059  
Fax: 800-206-9015