

## STANDARD SPECIFICATIONS

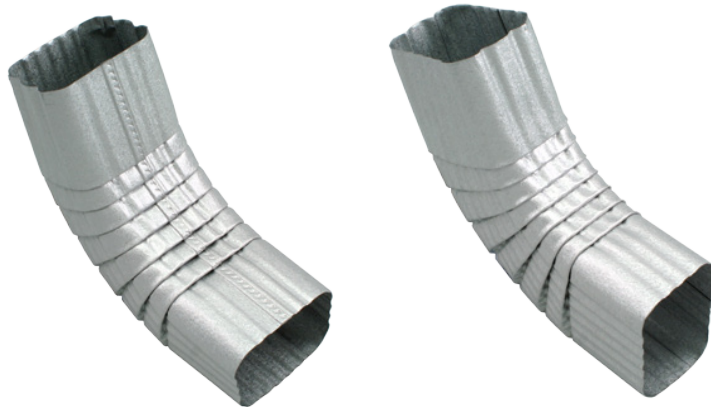
### 4x5 RECTANGULAR

#### GALVALUME PLUS DOWNSPOUTS AND ELBOWS

A.



B.



A

B

#### A. Standard Downspouts:

4" x 5" x 10'

#### B. Standard Elbows:

4x5: 75° A or B, 22.5° A, 45° A

#### Use:

Drain rain water runoff from gutter trough

#### Feature:

Made from 0.0190 galvalume plus. Rectangular downspouts and elbows are corrugated and crimped on sides for seamless look. Available in 30 painted aluminum colors, solid copper and galvalume plus.